

AVALON

The Art of the Pontoon







AVALON

The Art of the Pontoon



VRB

TABLE OF CONTENTS

Excalibur2-5

Elite Windshield
Elite Windshield Port Chair
Quad Lounge Windshield
Versatile Rear Bench Windshield

Excalibur LTD6-9

Elite Windshield
Elite Windshield Port Chair
Quad Lounge Windshield
Versatile Rear Bench Windshield

Waketoon 10-13

Catalina 14-27

- Rear J Lounge
- Elite
- Elite Windshield
- Versatile Rear Bench
- Versatile Rear Lounge
- Rear Lounge
- Quad Lounge
- Quad Lounge Windshield
- Entertainer
- Entertainer Funship
- Cruise Funship
- Rear Fish

LSZ 28-41

- Cruise
- Cruise II
- Cruise Rear Bench
- Quad Lounge
- Entertainer
- Elite
- Elite Windshield
- Versatile Rear Bench
- Versatile Rear Bench Windshield
- Versatile Rear Lounge
- Rear Lounge
- Rear Fish

Venture 8542-47

Cruise
Cruise II
Quad Lounge
Rear Fish
Center Console Fish
Elite Windshield

Venture48-55

Cruise
Cruise II
Quad Lounge
Cruise Bow Fish
Bow Fish
Fish N Cruise
Rear Fish

VLS/VTX	56-59
---------	-------

Cruise
Quad Fish
Quad Lounge

Gallery of Features & Options

Features & Options	60-67
Twin Engine Option	68
Performance & Watersports	69
Color Options	72-73

More models may be available.
Please review line drawings for all available models.

AVALON

EXCALIBUR

Excalibur





VRBW

CARBON FIBER

Fully integrated carbon fiber wall and tower construction.

AVALON

EXCALIBUR



Optional Starboard Side Dinette

The Excalibur,
where luxury
meets High
Performance.

Beautifully crafted
and meticulously
designed.



ELW

STANDARD FEATURES & SPECIFICATIONS



EXCALIBUR

HELMSTAND/ELECTRONICS

- Dual Admiral III fiberglass helmstands with full windshield, upholstered automotive-stitched trim, & Viper III touch-screen dash panel with detailed information center, USB charging ports & light controls
- 12-Volt power point
- Garmin 743XSV GPS
- Premium XL sound package: Fusion RA-770 radio, (8) Fusion SG RGB-lighted speakers & grills, Fusion 8-channel amp, Fusion D mono block digital amp, 10" Fusion Subwoofer, USB audio input & charge
- Steering - SeaStar hydraulic tilt
- Michigan steering wheel
- Courtesy light on helmstand
- Battery dual smart switch system
- Battery Charger

EXTERIOR

- Carbon fiber painted walls
- CX tower with bimini top
- USCG navigation lights
- RGB exterior EGT docklights
- RGB addressable rubrail lights
- RGB rear underwater lights
- Large Smoked Chrome Hi-Flex logos
- Heavy duty gates with logo panel
- Premium stainless telescoping ladder
- Quick-release fender holders with straps
- Full color-matched mooring cover
- Ski tow bar

HULL

- Waveglider triple 27" pontoons with high performance lifting fins, ski tow bar & aluminum waveshield
- Side keels
- 3" black rub rail with black vinyl insert
- Deck corner impact protection - black
- Tapered front deck
- Extended rear deck
- Pontoon double full risers
- (4) stainless steel pull-up cleats
- Bolted deck

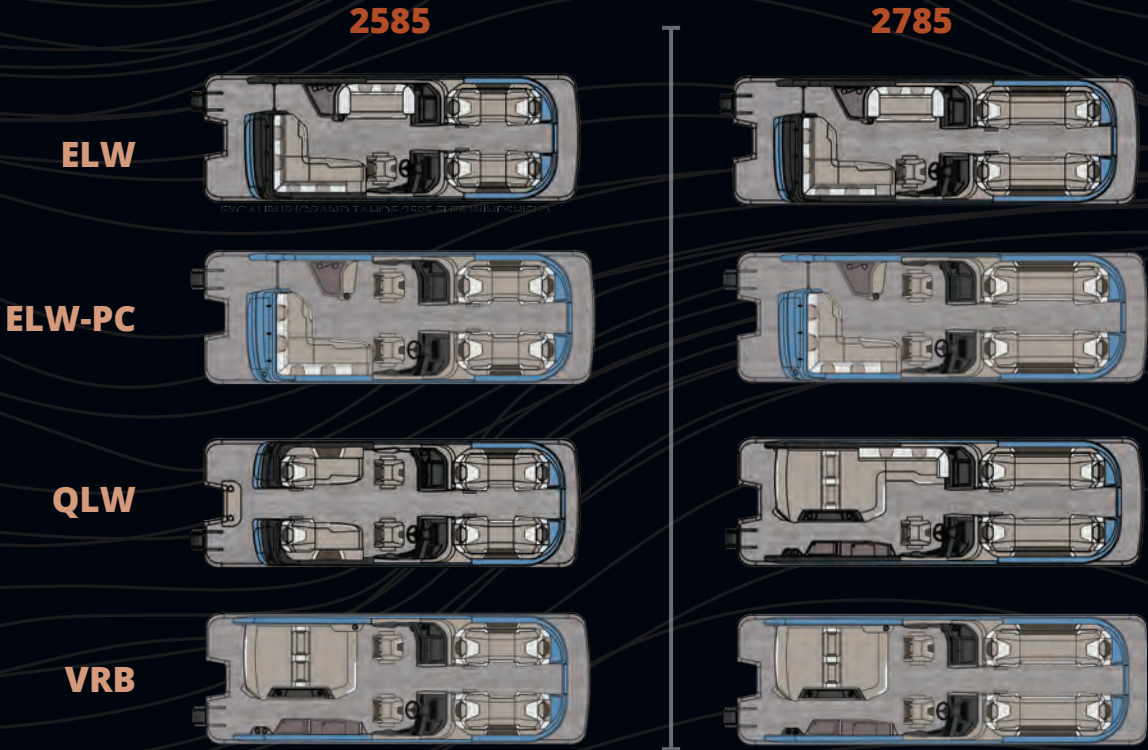
This flagship model boasts a long list of amenities so you can make the most of your time on the water.

FUEL

- 58 gallon remote fill center tube tank
- SST gas cap & vent

INTERIOR

- Mariner reclining high back driver's chair with flip-up bolster & color-matched accents
- Chair adjustment slider, front, back, rotate
- Full Teak vinyl flooring
- RGB lighted cup holders & mood lighting
- Large rectangle greywood heavy duty thermoform table with large cup holders, recessed tray & phone storage
- USB charging port
- Trash can built into lounge arm (where possible)
- Lifetime aluminum seat frames with flow-through ventilation
- Seat frame floor matting
- Ultrafine touch seat vinyl
- Deluxe seat frame cladding with SST vents
- (2) moveable cupholders
- Suspension seating



EXCALIBUR	LENGTH CLASS	BOAT LENGTH OVERALL	DECK LENGTH	PONTOON DIAMETER	WIDTH	DRY WEIGHT	MAX WEIGHT CAPACITY	MAX PERSONS POUNDS	MAX NUMBER PERSONS	MAX ENGINE HP
2585 X 3 27" WG	25	26' 6"	25' 3"	27" X 3	8.5'	4200	3075	2060	14	400
2785 X 27" WG	27	28' 6"	27' 3"	27" X 3	8.5'	4500	3385	2525	16	500
TWIN ENGINE CAPACITIES			MAX WEIGHT CAPACITY		MAX PERSONS POUNDS		MAX NUMBER PERSONS		MAX ENGINE HP	
2585 X 3 27" WG			2965		1130		9		800*	
2785 X 27" WG			3615		1580		10		1000*	





QLW



ELW

Excalibur LTD

EXCALIBUR LTD

The Elegance
& Sophistication
you'd expect from
the Excalibur
name with
traditional pontoon
craftsmanship.

QLW



WWW.AVALONPONTOONS.COM



QLW



ELW



QLW



VRBW



STANDARD FEATURES & SPECIFICATIONS



EXCALIBUR LTD

HELMSTAND/ELECTRONICS

- Dual Commander III fiberglass helmstands with full windshield, upholstered automotive-stitched trim, & Smart 80 touch-screen dash panel with detailed information center, USB charging ports & light controls
- 12-Volt power point
- Garmin 73SV GPS
- High performance sound package: Fusion RA-670 radio, (6) Fusion XS lighted speakers & grills, Fusion 6-channel amp, 10" Fusion Subwoofer, USB audio input & charge
- Steering - SeaStar hydraulic tilt
- Michigan steering wheel
- Courtesy light on helmstand
- Battery dual smart switch system

EXTERIOR

- Deco 2 external smooth retro walls
- EX tower with bimini top
- USCG navigation lights
- Exterior EGT docklights
- Rubrail lights
- Rear underwater lights
- Large Smoked Chrome Hi-Flex logos
- Premium stainless telescoping ladder
- Quick-release fender holders with straps
- Full color-matched mooring cover
- Ski tow bar

HULL

- Waveglider triple 27" pontoons with high performance lifting fins, ski tow bar & aluminum waveshield
- Side keels
- 3" black rub rail with black vinyl insert
- Deck corner impact protection - black
- Tapered front deck
- Extended rear deck
- Pontoon double full risers
- (4) stainless steel pull-up cleats
- Bolted deck

FUEL

- 58 gallon remote fill center tube tank
- SST gas cap & vent

INTERIOR

- Admiral reclining high back driver's chair with flip-up bolster & color-matched accents
- Chair adjustment slider, front, back, rotate
- Interior composite wall panels
- Riptide vinyl flooring
- Blue lighted cup holders & mood lighting
- Large rectangle greywood heavy duty thermoform table with large cup holders, recessed tray & phone storage
- USB charging port
- Trash can built into lounge arm (where possible)
- Lifetime aluminum seat frames with flow-through ventilation
- Seat frame floor matting
- Ultrafine touch seat vinyl
- Deluxe seat frame cladding with SST vents
- (2) moveable cupholders
- Suspension seating

ELW



QLW



QL



VRBW



2785



EXCALIBUR LTD	LENGTH CLASS	BOAT LENGTH OVERALL	DECK LENGTH	PONTOON DIAMETER	WIDTH	DRY WEIGHT	MAX WEIGHT CAPACITY	MAX PERSONS POUNDS	MAX NUMBER PERSONS	MAX ENGINE HP
2585 X 3 27" WG	25	26' 6"	25' 3"	27" X 3	8.5'	4360	3030	2175	14	400
2785 X 27" WG	27	28' 6"	27' 3"	27" X 3	8.5'	4660	3345	2485	16	500
TWIN ENGINE CAPACITIES			MAX WEIGHT CAPACITY		MAX PERSONS POUNDS		MAX NUMBER PERSONS		MAX ENGINE HP	
2585 X 3 27" WGTWIN			2965		1130		9		800*	
2785 X 27" WGTWIN			3615		1580		10		1000*	



AVALON

Waketoon

WAKETON



The most fun
you'll have on
the water.

This do-it-all
watersports
boat provides
endless thrills
for the whole
family.

Water ski,
tube, wakeboard
surf and so
much more.



AVALON

WAKET00N



STANDARD FEATURES & SPECIFICATIONS



WAKETOON

HELMSTAND/ELECTRONICS

- Dual Commander fiberglass helmstands with full windshield, upholstered automotive-stitched trim, & Viper III touch-screen dash panel with detailed information center, USB charging ports & light controls
- (2) 12-Volt power points
- Garmin 743XSV GPS
- Premium sound package: Fusion RA-770 radio, (8) Fusion SG RGB-lighted speakers & grills, Fusion 8-channel amp, Fusion D mono block digital amp, 10" Fusion Subwoofer, USB audio input & charge
- Steering - SeaStar hydraulic tilt
- Superior steering wheel
- Courtesy light on helmstand
- Battery dual smart switch system
- Battery charger

INTERIOR

- Sport High Back reclining driver's chair with flip-up bolster & color-matched accents
- Chair adjustment slider, front, back, rotate
- Interior composite wall panels
- Full Riptide vinyl flooring
- RGB lighted cup holders & mood lighting
- USB charging port
- Trash can built into lounge arm
- Lifetime aluminum seat frames with flow-through ventilation
- Seat frame floor matting
- Ultrafine touch seat vinyl
- Deluxe seat frame cladding with SST vents
- (2) moveable cupholders
- Suspension seating

FUEL

- 64 gallon remote fill center tube
- SST gas cap & vent

BUILT-IN POWER

- Mercury 350HP 6.2L V-8 I/O

WATERSPORTS FEATURES

- Touchscreen automatic & manual wake controls: adjustable electric actuators to press Waveshaper fins, multiple adjustment angles for precise wave definition preferences & ability to preset mph to user specifications
- Xtreme electric sport tower with RGB tower lights, bimini top & wakeboard racks
- Ski tow bar on sundeck
- Rear view surf camera
- Integrated rear swim platform

EXTERIOR

- Deco 2 external smooth multi-panel retro two-tone walls
- USCG navigation lights
- RGB deco built-in docklights
- RGB rubrail lights
- RGB rear underwater lights
- Large Smoked Chrome Hi-Flex logos
- Gates with lift-n-lay hinges & SST EZ lift latch
- Premium stainless telescoping ladder
- Quick-release fender holders with straps
- Full color-matched mooring cover

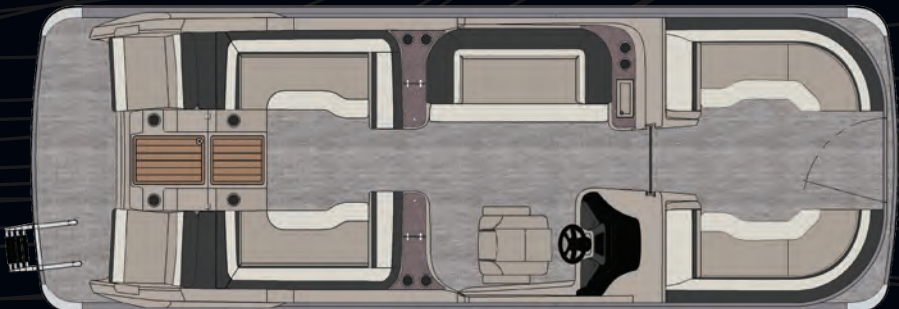
HULL

- Patented Wakesurf triple pontoon hull with an integrated rocker & shape along with contoured wake plates to enable desirable water flow
- In-floor ski storage
- Aluminum waveshield
- 3" rub rail with black vinyl insert
- Deck corner impact protection - polished aluminum
- Tapered front deck
- Extended rear deck
- Pontoon double full risers
- (4) stainless steel pull-up cleats

Our patented Waketoon Hull provides a truly unique ride to accommodate many different watersport activities

2385

WT



WAKETOON	LENGTH CLASS	BOAT LENGTH OVERALL	WIDTH	DRY WEIGHT	MAX WEIGHT CAPACITY	MAX PERSONS POUNDS	MAX NUMBER PERSONS	MAX ENGINE HP
2385 X 3 WT	23	23' 9"	8.5'	4200	2500	1470	10	350



AVALON

Catalina

CATALINA



QLW

Elegance
& Sophistication
makes Catalina
lead the pack.
This model elevates
the every day
pontoon experience.



CATALINA



VRB

Turn your
outings into
unforgettable
adventures
with the
Avalon Catalina



QL



VRL

CATALINA



QL



EL

AVA

| WWW.AVALONPONTOONS.COM

17





RJ

CATALINA



RJ



CRUFS



CRFS

CATALINA

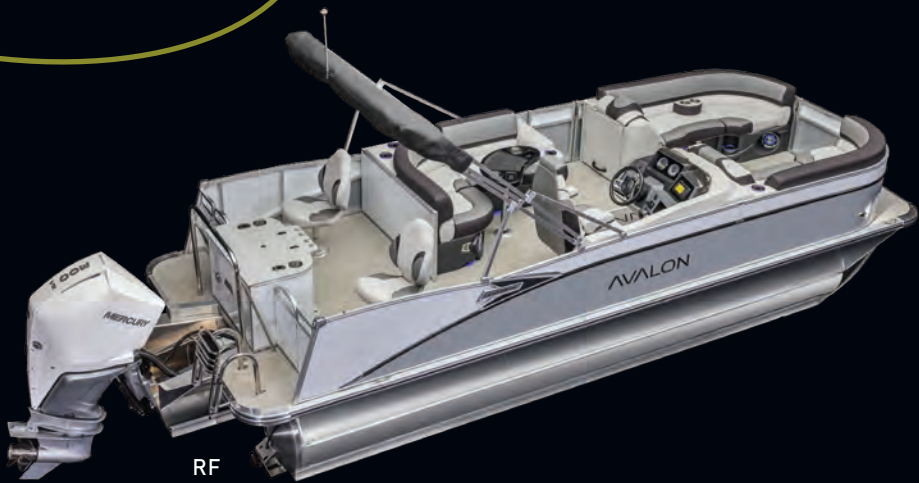


QLW



CATALINA

RL

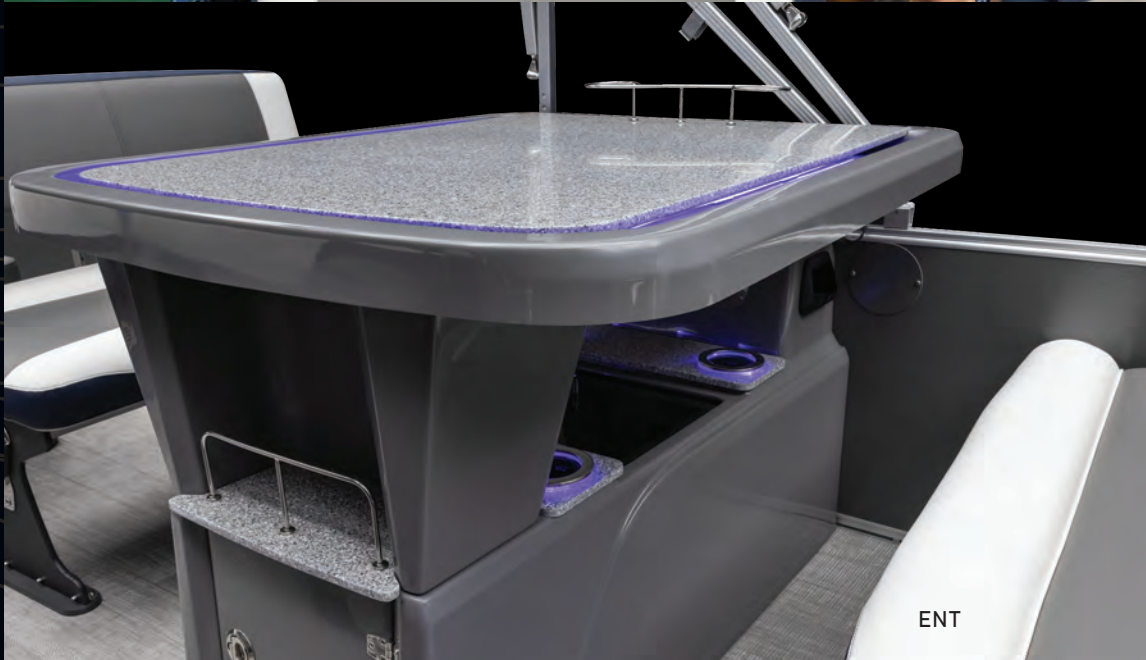


RF

CATALINA



ENT



ENT





CATALINA



AVA

WWW.AVALONPONTOONS.COM

25

HELMSTAND/ELECTRONICS

- Ensign III rotocast helmstand
- Tach, Volt, Fuel Gauges
- GPS speedometer
- 12-Volt power point
- Gold Plus sound package: Fusion RA-670 radio, (6) Fusion XS speakers & grills, Fusion 6-channel amp, USB audio input & charge
- Steering – mechanical tilt (EL, ENT, QL, RF, RJ, RL, VRB, VRL)
- Steering – BayStar hydraulic tilt (CRFS & ENTFS)
- Steering – SeaStar hydraulic tilt (ELW & QLW)
- Huron steering wheel
- Removeable windshield
- Courtesy light on helmstand

INTERIOR

- Commander's mid back reclining driver's chair with & color-matched accents
- Chair adjustment slider, front, back, rotate
- Interior composite wall panels (except RF)
- Full Riptide vinyl flooring
- Stainless steel cup holders
- Greywood heavy duty thermoform table with large cup holders, recessed tray & phone storage (large kidney or rectangle)
- USB charging port
- Lifetime aluminum seat frames with flow-through ventilation
- Sonora seat vinyl
- Deluxe seat frame cladding
- 2 moveable cupholders
- Suspension seating
- Lounge arms with storage (based on floorplans)
- Privacy station curtain & frame (N/A on QLW & 23' RJ)
- Vinyl non-skid strips for entry gates

EXTERIOR

- Deco 3 external smooth retro monochromatic walls
- Heavy Duty Square Frame Bimini Frame & Top (except CRFS)
- USCG navigation lights
- Exterior nav/docklight combo
- Large Smoked Chrome Hi-Flex logos
- Gates with lift-n-lay hinges & SST EZ lift latch
- Premium stainless telescoping ladder

FUEL

- 25 gallon direct fill transom tank (RJ only)
- 25 gallon remote fill transom tank (EL, ENT, ENTFS, QL, RF, RL, VRB, VRL)
- 32 gallon remote fill tank under sundeck with SST gas cap & vent (CRFS only)
- 58 gallon remote fill center tube tank (ELW & QLW)

HULL

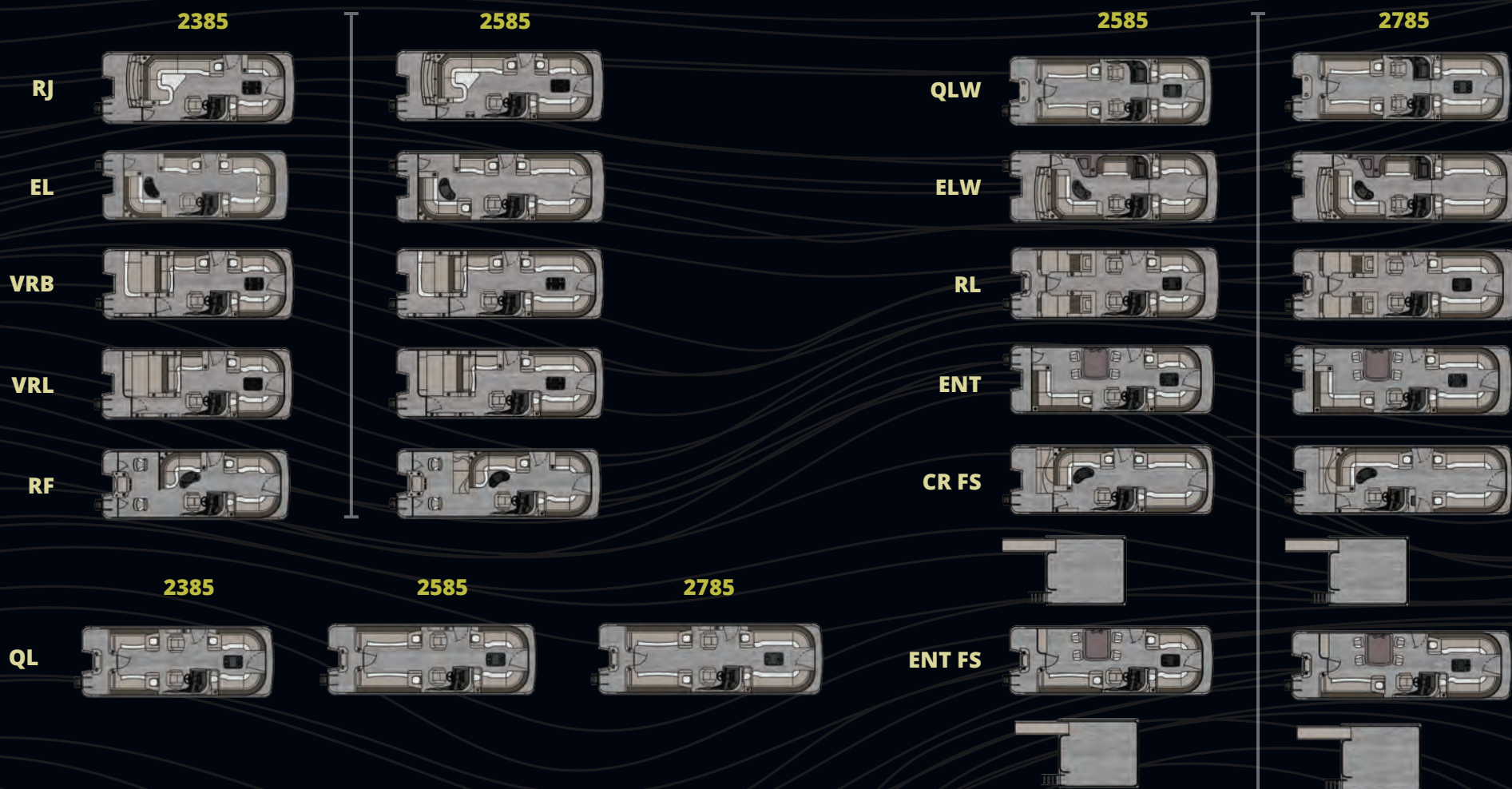
- (2) 25" diameter pontoons (EL, ENT, QL, RF, RJ, RL, VRB, VRL)
- (2) 27" diameter pontoons with lifting fins (CRFS & ENTFS)
- Waveglider triple 25" pontoons w/high performance lifting fins, ski tow bar & aluminum waveshield (ELW & QLW)
- 3" rub rail with black vinyl insert
- Deck corner impact protection – polished aluminum
- Tapered front deck
- Extended rear deck
- Pontoon double full risers
- (4) stainless U-bolt & cleat combo
- 25" transom (CRFS & ENTFS only)

FISHING

- Garmin Striker 5CV color fishfinder/depth finder (RF)
- Rear fishing center with 2 fishing chairs, rod holders & livewell (RF)
- Tackle trays with rear sink & access door (RF)

CATALINA	LENGTH CLASS	BOAT LENGTH OVERALL	DECK LENGTH	PONTOON DIAMETER	WIDTH	DRY WEIGHT	MAX WEIGHT CAPACITY	MAX PERSONS POUNDS	MAX NUMBER PERSONS	MAX ENGINE HP
2385 25"	23	23' 5"	23' 3"	25"	8.5'	2150	2150	1540	11	140
2385 X 3 25" SP	23	24' 6"	23' 3"	25" X 3	8.5'	2800	2582	1768	12	200
2385 X 3 25" WG	23	24' 6"	23' 3"	25" X 3	8.5'	2900	2560	1600	12	250
2385 X 3 27" WG	23	24' 6"	23' 3"	27" X 3	8.5'	3050	2980	1890	13	300
2585 25"	25	25' 5"	25' 3"	25"	8.5'	2450	2430	1770	13	140
2585 X 3 25" SP	25	26' 6"	25' 3"	25" X 3	8.5'	3000	2877	2063	14	200
2585 X 3 25" WG	25	26' 6"	25' 3"	25" X 3	8.5'	3100	2825	2015	14	300
2585 X 3 27" WG	25	26' 6"	25' 3"	27" X 3	8.5'	3200	3270	2460	17	400
2785 25"	27	27' 5"	27' 3"	25"	8.5'	2650	2675	2015	14	150
2785 X 25" SP	27	28' 6"	27' 3"	25" X 3	8.5'	3125	3200	2390	17	200
2785 X 25" WG	27	28' 6"	27' 3"	25" X 3	8.5'	3300	3120	2310	16	300
2785 X 27" WG	27	28' 6"	27' 3"	27" X 3	8.5'	3400	3575	2760	19	500
CATALINA/CASCADE FUNSHIP										
2585 27"	25	25' 5"	25' 3"	27"	8.5'	3300	2590	1830	12	150
2585 X 3 27" WG	25	25' 5"	25' 3"	27" X 3	8.5'	4200	3070	2000	14	250
2785 X 3 27" WG	27	28' 6"	27' 3"	27" X 3	8.5'	4800	3320	2370	17	250
TWIN ENGINE CAPACITIES			MAX WEIGHT CAPACITY		MAX PERSONS POUNDS		MAX NUMBER PERSONS		MAX ENGINE HP	
2585 X 3 27" TWIN			2965		1130		9		800*	
2785 X 3 27" TWIN			3615		1580		10		1000*	





AVALON

LSZ



VRBW

LSZ



ELW

The LSZ is our best seller for a reason. From sandbars to sunsets, there's nothing this model can't do.

LSZ





RL

LSZ



ENT



CR



ZS1



A full or half camper enclosure can extend your season and protect you from the elements.

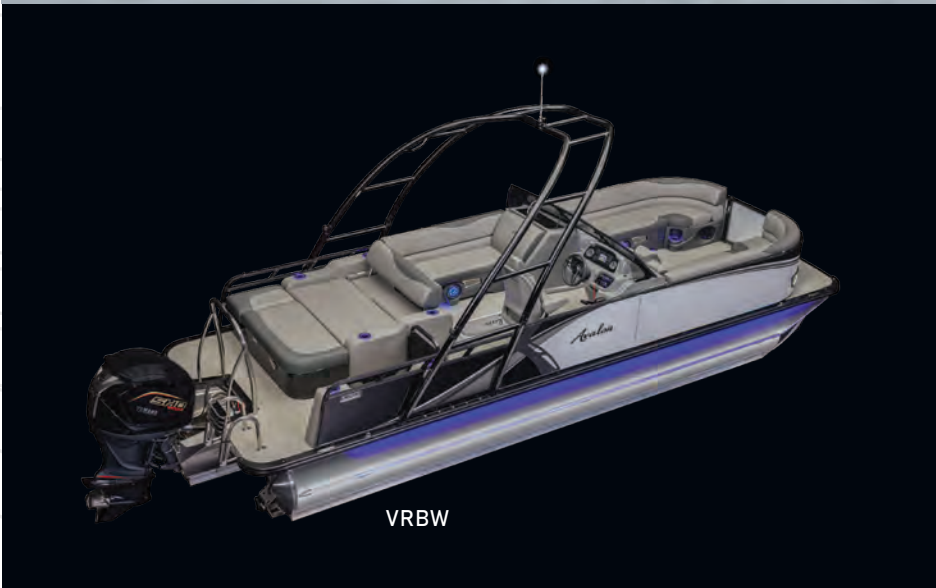




LSZ



VRBW



VRBW



VRB



CR11



RF

LSZ



VRL



CR11



VRBW



VRL

HELMSTAND/ELECTRONICS

- Crew rotocast helmstand with large dash & side storage
- Dual Cadet fiberglass helmstands with full windshield & greywood dash panels (ELW/VRBW only)
- Tach, Volt, Fuel Gauges
- 12-Volt power point
- Silver sound package: Fusion RA-210 radio, (4) Fusion EL speakers & grills
- Silver Plus sound package (VRB/VRBW/VRL): Fusion RA-210 radio, (6) Fusion EL speakers & grills, Fusion zone amp, USB audio input & charge
- Steering – mechanical tilt
- Steering – SeaStar hydraulic tilt (ELW/VRBW only)
- Ontario steering wheel
- Removeable windshield (except ELW/VRBW)
- Courtesy light on helmstand

INTERIOR

- Sport low back driver's chair with arms
- Chair adjustment slider, front, back, rotate
- Full Riptide vinyl flooring
- Stainless steel cup holders
- Greywood heavy duty thermoform table with large cup holders, recessed tray & phone storage (large kidney or rectangle)
- 20-quart insulated cooler (ELW only)
- USB charging port
- Lifetime aluminum seat frames with flow-through ventilation
- Sonora seat vinyl
- Deluxe seat frame cladding
- Suspension seating
- Lounge arms with storage (based on floorplans)
- Vinyl non-skid strips for entry gates

EXTERIOR

- Deco 4 external multi panel smooth walls
- Heavy Duty Square Frame Bimini Frame & Top
- USCG navigation lights
- Hi-flex chrome logos
- Gates with lift-n-lay hinges
- Premium stainless telescoping ladder

FUEL

- 25 gallon direct fill transom tank
- 24 gallon remote fill tank under sundeck with SST gas cap & vent (CR)
- 38 gallon direct fill tank in center pontoon (ELW/VRBW)

REAR FISH

- Rear fishing center with 2 fishing chairs, rod holders

HULL

- (2) 25" diameter pontoons
- Sport Performance triple 25" pontoons with 4 high performance lifting fins, ski tow bar & aluminum waveshield (ELW/VRBW only)
- 3" rub rail with black vinyl insert
- Deck corner impact protection – aluminum
- Tapered front deck
- Extended rear deck
- Pontoon double full risers
- (4) stainless U-bolt & cleat combo



LSZ	LENGTH CLASS	BOAT LENGTH OVERALL	DECK LENGTH	PONTOON DIAMETER	WIDTH	DRY WEIGHT	MAX WEIGHT CAPACITY	MAX PERSONS POUNDS	MAX NUMBER PERSONS	MAX ENGINE HP
1985 25"	19	19' 5"	19' 3"	25"	8.5'	1650	1835	1475	10	90
1985 X 3 25" SP	19	20' 6"	19' 3"	25" X 3	8.5'	1950	2100	1440	10	115
1985 X 3 25" WG	19	20' 6"	19' 3"	25" X 3	8.5'	1950	2100	1440	10	115
2185 25"	21	21' 5"	21' 3"	25"	8.5'	1850	2035	1300	10	115
2185 X 3 25" SP	21	22' 6"	21' 3"	25" X 3	8.5'	2750	2240	1710	12	175
2185 X 3 25" WG	21	22' 6"	21' 3"	25" X 3	8.5'	2750	2240	1710	12	175
2185 X 3 27" WG	21	22' 6"	21' 3"	27" X 3	8.5'	2400	2700	2020	14	175
2385 25"	23	23' 5"	23' 3"	25"	8.5'	2150	2150	1540	11	140
2385 X 3 25" SP	23	24' 6"	23' 3"	25" X 3	8.5'	2900	2560	1600	12	250
2385 X 3 25" WG	23	24' 6"	23' 3"	25" X 3	8.5'	2900	2560	1600	12	250
2385 X 3 27" WG	23	24' 6"	23' 3"	27" X 3	8.5'	2950	2915	2255	16	300
2585 25"	25	25' 5"	25' 3"	25"	8.5'	2450	2430	1770	13	140
2585 X 3 25" SP	25	26' 6"	25' 3"	25" X 3	8.5'	3000	2877	2063	14	250
2585 X 3 25" WG	25	26' 6"	25' 3"	25" X 3	8.5'	3100	2825	2015	14	300
2585 X 3 27" WG	25	26' 6"	25' 3"	27" X 3	8.5'	3200	3270	2460	17	400



1985

2185

2385

2585

CRII

CRB

CR

QL

ENT

RF

ELW

EL

VRB

VRL

VRBW

RL



CR



Whether it's fishing or cruising, the Venture 85 offers the traditional pontoon features and design in a variety of layouts.



RF



RF



VENTURE 85



VENTURE 85

AVALON



VENTURE 85



VENTURE 85

HELMSTAND/ELECTRONICS

- Cadet II Rotocast Helmstand (except ELW)
- Dual Cadet Rotocast helmstands with twin windscreens (ELW)
- Tach, Volt, Fuel Gauges
- 12-Volt power point
- Bronze sound package: Fusion RA-60 radio, (4) Fusion EL speakers & grills
- Mechanical steering (no tilt) (except CCF)
- SeaStar hydraulic tilt steering (CCF only)
- Erie steering wheel
- Removeable windshield (except ELW)
- Courtesy light on helmstand

INTERIOR

- Sport low back driver's chair
- Chair adjustment slider, front, back, rotate
- Full Riptide vinyl flooring
- Stainless steel cup holders
- USB charging port
- Lifetime aluminum seat frames with flow-through ventilation
- Sonora seat vinyl
- Color-matched seat frame cladding
- Suspension seating
- Lounge arms with storage (based on floorplans)
- Vinyl non-skid strips for entry gates

EXTERIOR

- .040 Heritage external smooth wall panels
- Heavy Duty Square Frame Bimini Frame & Top
- USCG navigation lights
- Mirror chrome logos
- Gates with lift-n-lay hinges
- Stainless steel telescoping ladder (CCF/RF only)
- Aluminum ladder (except RF/CCF)

FUEL

- 25 gallon direct fill transom tank
- 38 gallon direct fill tank in center pontoon (CCF only)

FISHING

- Garmin Striker 5CV color fishfinder/depth finder (CCF only)
- Rear fishing center with rod holders & livewell (CCF/RF only)
- Rod box (CCF only)
- Tackle trays with rear sink & access door (CCF only)

HULL

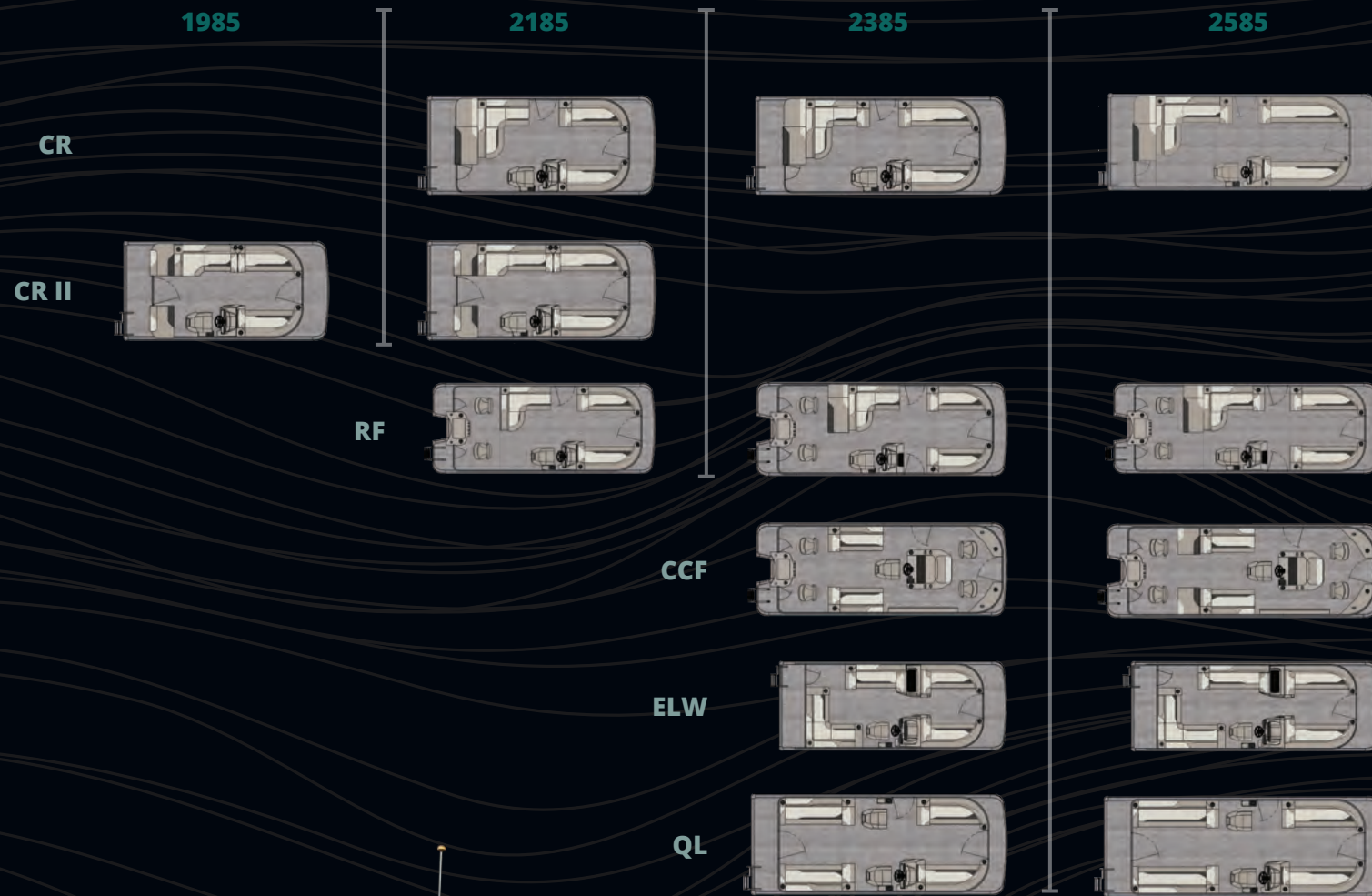
- (2) 25" diameter pontoons
- Sport Performance triple 25" pontoons w/ 4 high performance lifting fins, ski tow bar & aluminum waveshield (CCF only)
- 3" rub rail with black vinyl insert
- Deck corner impact protection – aluminum
- Tapered front deck
- Extended rear deck (CCF/RF only)
- Pontoon double full risers
- (4) stainless U-bolt & cleat combo



CR

VENTURE 85	LENGTH CLASS	BOAT LENGTH OVERALL	DECK LENGTH	PONTOON DIAMETER	WIDTH	DRY WEIGHT	MAX WEIGHT CAPACITY	MAX PERSONS POUNDS	MAX NUMBER PERSONS	MAX ENGINE HP
1985 25"	19	19' 5"	19' 3"	25"	8.5'	1650	1835	1475	10	90
1985 X 3 25" SP	19	20' 6"	19' 3"	25" X 3	8.5'	1950	2100	1440	10	115
1985 X 3 25" WG	19	20' 6"	19' 3"	25" X 3	8.5'	1950	2100	1440	10	115
2185 25"	21	21' 5"	21' 3"	25"	8.5'	1850	2035	1300	10	115
2185 X 3 25" SP	21	22' 6"	21' 3"	25" X 3	8.5'	2750	2240	1710	12	175
2185 X 3 25" WG	21	22' 6"	21' 3"	25" X 3	8.5'	2750	2240	1710	12	175
2385 25"	23	23' 5"	23' 3"	25"	8.5'	2150	2150	1540	11	140
2385 X 3 25" SP	23	24' 6"	23' 3"	25" X 3	8.5'	2900	2560	1600	12	250
2385 X 3 25" WG	23	24' 6"	23' 3"	25" X 3	8.5'	2900	2560	1600	12	250
2385 X 3 27" WG	23	24' 6"	23' 3"	27" X 3	8.5'	3050	2980	1890	13	300
2585 25"	25	25' 5"	25' 3"	25"	8.5'	2450	2430	1770	13	140
2585 X 3 25" SP	25	26' 6"	25' 3"	25" X 3	8.5'	3000	2877	2063	14	250
2585 X 3 25" WG	25	26' 6"	25' 3"	25" X 3	8.5'	3100	2825	2015	14	300
2585 X 3 27" WG	25	26' 6"	25' 3"	27" X 3	8.5'	3200	3270	2460	17	400







FNC



QL

Venture



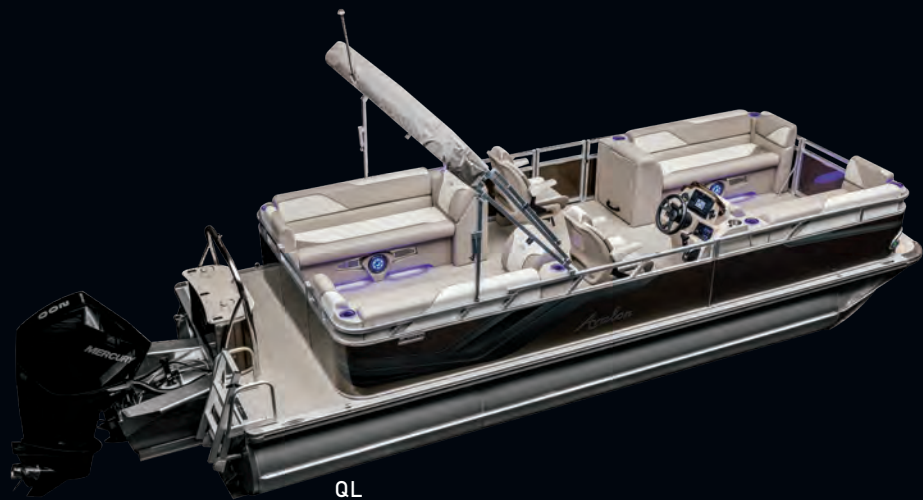
CR

This compact model in 7.5' and 8' wide, is easy to trailer and easy to operate.

VENTURE



CRB



QL



FNC

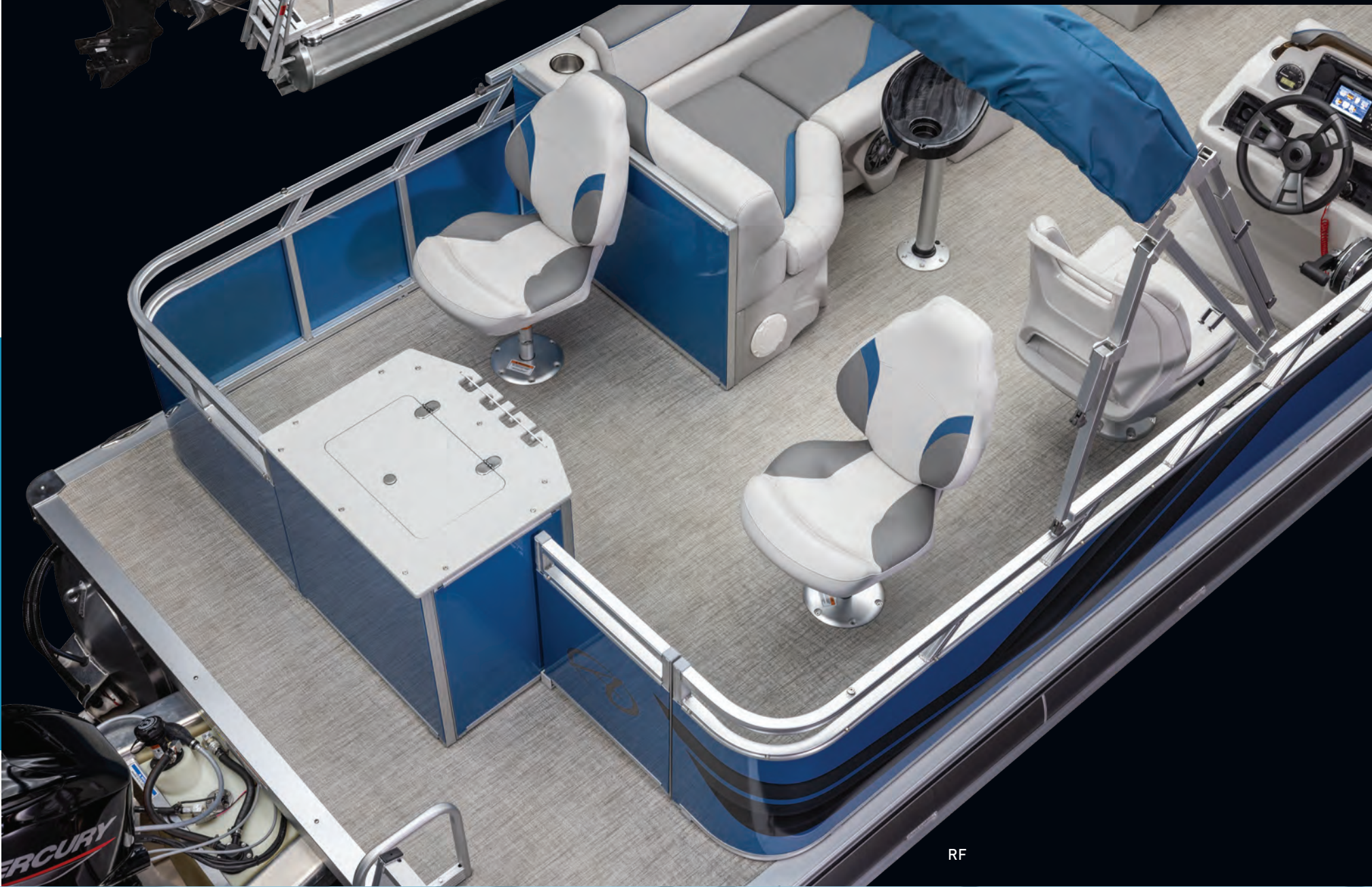
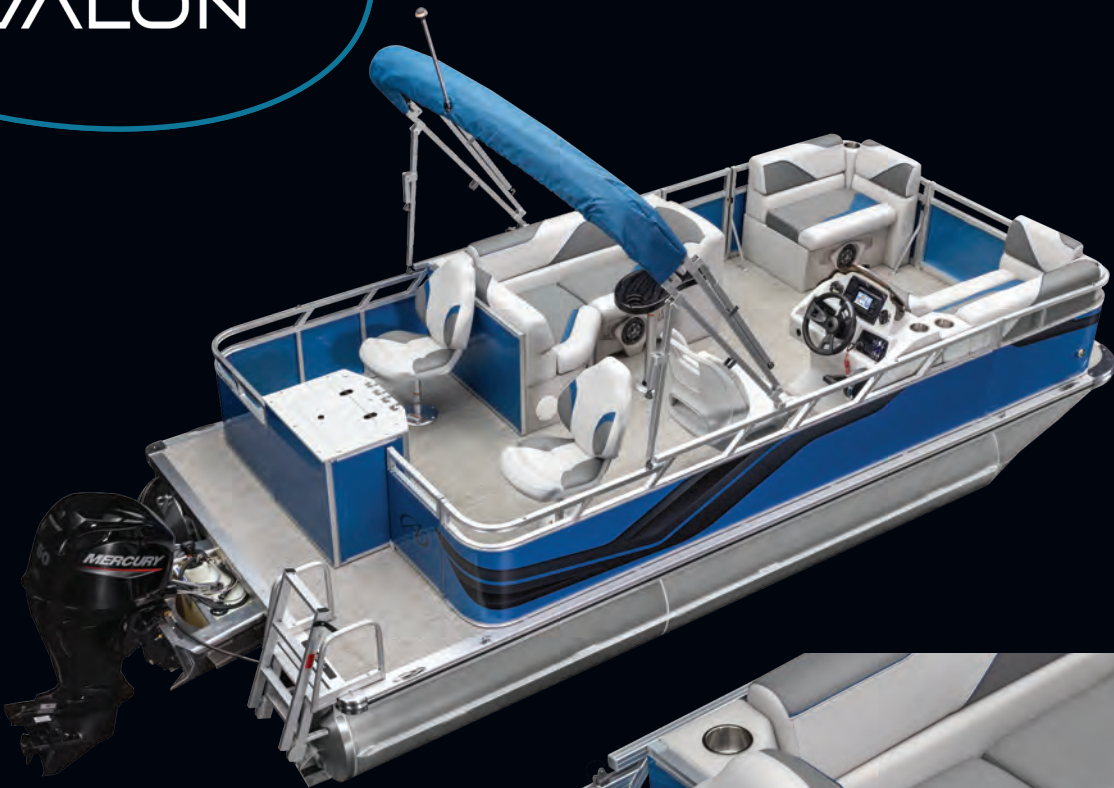
AVA



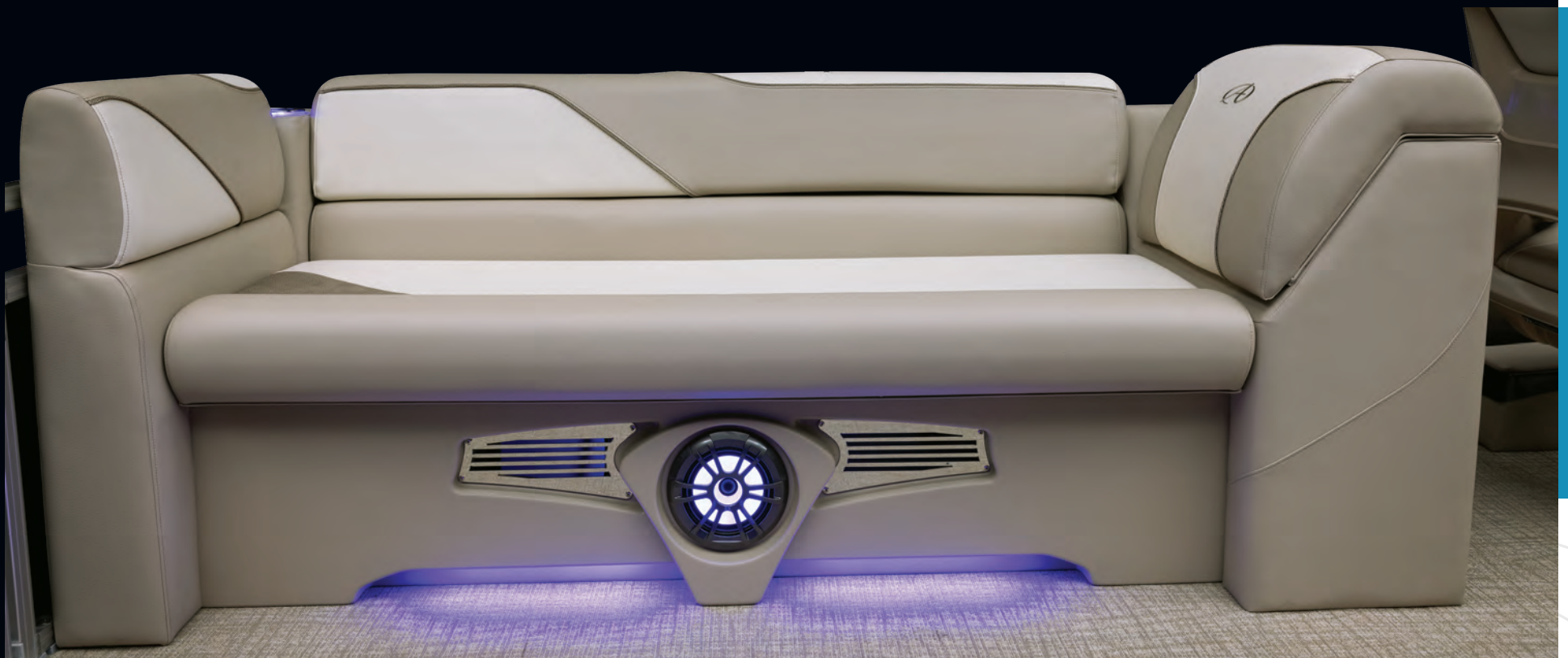
VENTURE

AVA

| WWW.AVALONPONTOONS.COM



RF



HELMSTAND/ELECTRONICS

- Cadet II Roto Helmstand
- Tach, Volt, Fuel Gauges
- 12-Volt power point
- Bronze sound package: Fusion RA-60 radio, (4) Fusion EL speakers & grills
- Erie steering wheel
- Removeable windshield
- Courtesy light on helmstand

INTERIOR

- Sport low back driver's chair
- Chair adjustment slider, front, back, rotate
- Full Riptide vinyl flooring
- Stainless steel cup holders
- Greywood small kidney thermoform table
- USB charging port
- Lifetime aluminum seat frames with flow-through ventilation
- Sonora seat vinyl
- Color-matched seat frame cladding
- Suspension seating
- Lounge arms with storage (based on floorplans)
- Vinyl non-skid strips for entry gates

EXTERIOR

- Sport low back driver's chair
- Chair adjustment slider, front, back, rotate
- Full Riptide vinyl flooring
- Stainless steel cup holders
- Greywood small kidney thermoform table
- USB charging port
- Lifetime aluminum seat frames with flow-through ventilation
- Sonora seat vinyl
- Color-matched seat frame cladding
- Suspension seating
- Lounge arms with storage (based on floorplans)
- Vinyl non-skid strips for entry gates

HULL

- (2) 23" diameter pontoons
- 3" rub rail with black vinyl insert
- Deck corner impact protection – aluminum
- Tapered front deck
- Pontoon double full risers
- (4) stainless U-bolt & cleat combo

FUEL

- 15 gallon direct fill transom tank (15', 17' & 19')
- 25 gallon direct fill transom tank (21', 23' & 25')

FISHING

- Baitwell in bench (15'/17' BF only)
- Livewell in bench (19' BF & 19'/21' CRBF only)
- Rear fishing center with rod holders & livewell (FNC & RF only)

VENTURE	LENGTH CLASS	BOAT LENGTH OVERALL	DECK LENGTH	PONTOON DIAMETER	WIDTH	DRY WEIGHT	MAX WEIGHT CAPACITY	MAX PERSONS POUNDS	MAX NUMBER PERSONS	MAX ENGINE HP
1575	15	15' 5"	14'	23"	7.5'	1150	11700	800	5	40
1575 X 3 25" SP	15	16' 6"	14'	25" X 3	7.5'	1250	1600	1040	7	60
1775	17	17' 6"	16'	23"	7.5'	1350	1350	950	6	50
1775 X 3 25" SP	17	18' 6"	16'	25" X 3	7.5'	1700	1860	1300	9	90
1975	19	19' 5"	18'	23"	7.5'	1600	1575	1050	7	75
1975 X 3 25" SP	19	20' 6"	18'	25" X 3	7.5'	1950	2116	1493	10	115
2180	21	21' 5"	20'	23"	8'	1750	1805	1250	9	90
2180 X 3 25" SP	21	22' 6"	20'	25" X 3	8'	2200	2370	1710	12	175
2380	22	23' 5"	22'	23"	8'	2000	2000	1450	10	100
2380 X 3 25" SP	23	24' 6"	22'	25" X 3	8'	2800	2582	1768	12	200
2380 X 3 25" WG	23	24' 6"	22'	25" X 3	8'	2800	2580	1780	12	250



	1575	1775	1975	2180	2380
CR					
BF					
CR BF					
CRB					
FNC					
RF					
QL					

VLS/VTX



VLS QL



VLS QL

Our entry level
promo series
models provide
you with all the
things you need
and none of
the things you
don't, to begin
your journey
on the water.



VTX QF

VLS / VTX



VTX CR



VTX QF



VLS QL

VLS / VTX

STANDARD FEATURES & SPECIFICATIONS



- HELMSTAND/ELECTRONICS

 - Cadet II Roto Helmstand
 - Tach, Volt, Fuel Gauges
 - 12-Volt power point
 - Bronze sound package: Fusion RA-60 radio, (4) Fusion EL speakers & grills
 - Mechanical Tilt Steering
 - Black soft-grip steering wheel
 - Removeable windshield
 - Courtesy light on helmstand
- INTERIOR

 - Sport low back driver's chair
 - Chair adjustment slider, front, back, rotate
 - Full Riptide vinyl flooring
 - Stainless steel cup holders
 - Greywood small kidney thermoform table
 - USB charging port
 - Lifetime aluminum seat frames with flow-through ventilation
 - Sonora seat vinyl (choose buckskin, cognac, graphite, silver or cream white)
 - Color-matched seat frame cladding
 - Suspension seating
 - Lounge arms with storage (based on floorplans)
 - Vinyl non-skid strips for entry gates
 - Small built-in trash can (where possible)
- EXTERIOR

 - .040 Heritage external smooth wall panels
 - Heavy Duty Square Frame Bimini Frame & Top
 - USCG navigation lights
 - Flat graphic logos
 - Gates with lift-n-lay hinges
 - Aluminum ladder
 - Playpen cover

HULL

 - (2) 25" diameter pontoons
 - 3" rub rail with black vinyl insert
 - Deck corner impact protection – aluminum
 - Tapered front deck
 - Pontoon double full risers
 - (4) stainless U-bolt & cleat combo
- FUEL

 - 25 gallon direct fill transom tank

QUAD FISH (VTX)

 - Rear fishing center with rod holders & livewell
 - (4) fishing chairs

VLS

QL

1980

2180

2380

VLS	LENGTH CLASS	BOAT LENGTH OVERALL	DECK LENGTH	PONTOON DIAMETER	WIDTH	DRY WEIGHT	MAX WEIGHT CAPACITY	MAX PERSONS POUNDS	MAX NUMBER PERSONS	MAX ENGINE HP
1980 25"	18	19' 5"	18'	25"	8'	1650	1835	1475	10	90
2180 25"	20	21' 5"	20'	25"	8'	1850	2035	1300	10	115
2380 25"	22	23' 5"	22'	25"	8'	2150	2150	1540	11	140

VTX

CR

1780

1980

QF

VTX	LENGTH CLASS	BOAT LENGTH OVERALL	DECK LENGTH	PONTOON DIAMETER	WIDTH	DRY WEIGHT	MAX WEIGHT CAPACITY	MAX PERSONS POUNDS	MAX NUMBER PERSONS	MAX ENGINE HP
1780 25"	16	17' 5"	16'	25"	8'	1425	1580	1050	7	60
1980 25"	18	19' 5"	18'	25"	8'	1650	1835	1475	10	90

VLS / VTX

			WAKETOON	EXCALIBUR	EXCALIBUR LTD	CATALINA	LSZ	VENTURE 85	VENTURE	VLS	VTX
HELMSTANDS	Admiral III & Viper III Medallion Touchscreen	H1	—	S	—	—	—	—	—	—	—
	Commander III - Analog	H2	—	—	—	W	—	—	—	—	—
	Commander III - Smart 80 Touchscreen	H3	—	—	S	O	—	—	—	—	—
	Commander - Viper III Medallion Touchscreen	H4	S	—	O	O	—	—	—	—	—
	Ensign III - Analog	H5	—	—	—	S	—	—	—	—	—
	Ensign III - Smart 80 Touchscreen	H6	—	—	—	O	—	—	—	—	—
	Raised Platform for Commander	H9	—	—	SF	O	—	—	—	—	—
	Crew - Roto	H10	—	—	—	—	S	—	—	—	—
	Crew - Smart 80 Touchscreen	H11	—	—	—	—	O	—	—	—	—
	Cadet - Windshield Fiberglass	H12	—	—	—	—	W	—	—	—	—
	Cadet - Windshield Roto	H13	—	—	—	—	—	W	—	—	—
	Cadet II - Roto	H14	—	—	—	—	—	S	S	S	S
	Center Console	H15	—	—	—	—	—	CF	—	—	—
STEERING	Superior Steering Wheel	S1	S	O	O	O	—	—	—	—	—
	Michigan Steering Wheel	S2	—	S	S	O	—	—	—	—	—
	Huron Steering Wheel	S3	—	—	—	S	—	—	—	—	—
	Ontario Steering Wheel	S4	—	—	—	—	S	O	O	—	—
	Erie Steering Wheel	S5	—	—	—	—	—	S	S	—	—
	Black Soft Grip Wheel	S6	—	—	—	—	—	—	—	S	S
	Seastar Hydraulic	S8	S	S	S	O,W	O,W	O,CF	O	—	—
	Baystar Hydraulic	S9	—	—	—	FS	O	O	O	O	O
CHAIRS	Mariner Recliner with Flip Up Bolster	C1	—	S	—	—	—	—	—	—	—
	Admiral Recliner with Flip Up Bolster	C2	—	—	O	O	O	O	O	—	—
	Admiral Recliner	C3	—	—	S	O	O	O	O	—	—
	Sport High Back with Flip Up Bolster	C4	S	—	—	O	O	O	O	—	—
	Sport High Back with Arms	C5	—	—	—	O	O	O	O	—	—
	Commander Mid Back Recliner	C6	—	—	—	S	O	O	O	O	O
	Sport Low Back with Arms	C7	—	—	—	—	S	O	O	—	—
	Sport Low back	C8	—	—	—	—	—	S	S	S	S
	Fishing	C9	—	—	—	F	F	F	F	—	F
TABLES	Large Heavy Duty Curved Greywood Table	F20	—	O	O	SF	SF	O	O	—	—
	Large Heavy Duty Rectangle Greywood Table	F21	—	S	S	SF	SF	O	O	—	—
	Small Greywood Curved Table	F22	—	—	—	—	—	S	S	S	S
FURNISHINGS	8000 Series (not pictured)	F3	—	S	—	—	—	—	—	—	—
	6000 Series Ultrafine (not pictured)	F3.1	—	—	S	—	—	—	—	—	—
	5000 Series Ultrafine	F3.2	—	—	—	O	—	—	—	—	—
	4000 Series	F3.3	S	—	—	S	O	—	—	—	—
	2000 Series	F3.4	—	—	—	—	S	O	O	—	—
	1500 Series	F3.5	—	—	—	—	—	S	S	—	—
	1000 Series (not pictured)	F3.6	—	—	—	—	—	—	—	S	S

S = Standard
O = Option

• = Not Available
W = Standard on Windshield Model

CF = Center Console Fish Only
F = Standard on Fish Models Only

SF = Standard Depending on Floorplan
FS = Standard on Funship Models



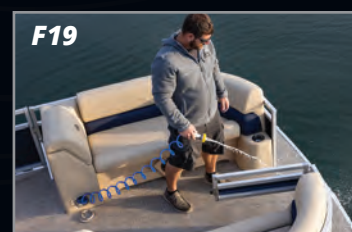
			WAKETOON	EXCALIBUR	EXCALIBUR LTD	CATALINA	LSZ	VENTURE 85	VENTURE	VLS	VTX
LIGHTING	RGB Interior & Exterior Light Package	L2	S	S	O	O	O	O	O	—	—
	Blue Ice Interior Light Package	L3	—	—	S	O	O	O	O	—	—
	Blue Interior Mood Lights	L5	—	—	—	O	O	O	O	O	O
	Blue Under Rubrail Lights	L6	—	—	—	O	O	O	O	—	—
	Rear Underwater Lights	L7	S	S	S	O	O	O	O	—	—
	Blue lighted cup holders - entire boat	L8	—	—	S	O	O	O	O	—	—
	EGT Docklights	L9	—	S	S	—	—	—	—	—	—
	Deco Built In Docklights	L10	S	—	—	O	—	—	—	—	—
	LED Accent Built In Chrome Docklights	L11	—	—	—	O	O	O	—	—	—
	LED Accent Built In Blackout Docklights	L12	—	—	—	O	O	O	—	—	—
	Chrome 90° Built In Docklights	L13	—	—	—	—	—	—	O	—	O
	Black 90° Built In Docklights	L14	—	—	—	—	—	—	O	—	—
	Chrome Wall Mount Nav/Dock Light	L15	—	—	—	S	O	O	—	O	—
TOPS	Bimini Top - Electric (Rear Only)	B6	—	—	—	OXF	O	O	—	—	—
	Bimini Top - Blackout 1-1/4" Square Anodized Frame	B8	—	—	—	OXF	O	O	O	—	—
	Bimini Top - 1-1/4" Square Anodized Frame	B9	—	—	—	SXF	S	S	S	S	S
	Bow Mount Bimini Top (Matches Rear Frame)	B9.1	—	—	—	O	O	O*	O*	—	—
	Bimini Top for Funship Roof	B9.2	—	—	—	OFS	—	—	—	—	—
	Deco Uprights for Funship Roof	B11	—	—	—	OFS	—	—	—	—	—
ENTERTAINMENT	Booth Bar w/Flip Back Seats, Cooler, Phone Chargers & Trash Can	F17	—	—	—	O*	—	—	—	—	—
	Bar with Stools, Cooler, Phone Chargers, Trash Can	F17.1	—	—	—	SE	—	—	—	—	—
	Oversize Stationary Table	F17.2	—	—	—	—	SE	—	—	—	—
	Port Rear Fiberglass Prep Center w/Storage Door & Sink	F17.3	—	—	ELW	ELW	—	—	—	—	—
	Port Rear Prep Center w/Built In Cooler & Sink	F17.4	—	—	—	—	ELW	—	—	—	—
	Wash Down Kit	F19	—	O	O	O	O	O	O	—	—
FINISH OPTIONS	VRB Rear Railing & Chain Across Entry	W6	—	—	—	O*	O*	—	—	—	—
	Composite Interior Wall Covers	W9	S	S	S	SEF	—	—	—	—	—
	Blackout Package Walls, Rubrail, Corners, & Top Frame	P8	O	S	S	O	O	O	O	—	—

S = Standard
O = Option
SXF = Standard Except Funship

— = Not Available
SEF = Standard Except on Fish

OXF = Option Except Funship
OFS = Option on Funship
SE = Standard on Entertainer

O* = Option Depending on Floorplan
ELW = Elite Windshield



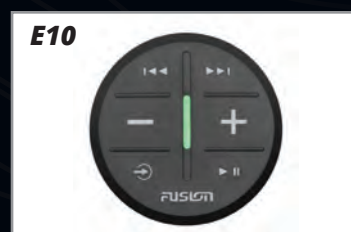
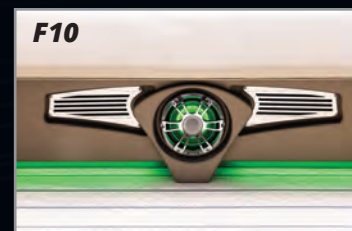
			WAKETOON	EXCALIBUR	EXCALIBUR LTD	CATALINA	LSZ	VENTURE 85	VENTURE	VLS	VTX
FURNISHING FEATURES	Moveable Cup Holder - SST Cups	F5	S	S	S	S	O	O	O	—	—
	Bow Filler Bench	F6	—	O	O	O	O	—	—	—	—
	Ottoman Cooler	F7	—	O	O	O	O	O	O	—	—
	Floor Matting Under Bench	F9	S	S	S	O	O	O	O	—	—
	Deco Seat Cladding - BRONZE	F10	S	S	S	S	S	O	O	—	—
	Deco Seat Cladding - COGNAC	F10.1	O	O	O	O	O	O	O	—	—
	Deco Seat Cladding - CHARCOAL	F10.2	O	O	O	O	O	O	O	—	—
	SILVER Color-matched Seat Cladding	F10.3	—	—	—	—	—	O	O	O	O
	CREAM WHITE Color-matched Seat Cladding	F10.4	—	—	—	—	—	S	S	S	S
	BUCKSKIN Color-matched Seat Cladding	F10.5	—	—	—	—	—	O	O	O	O
	SST Vent Covers for Seat Cladding	F11	S	S	S	O	O	O	O	—	—
	Privacy Curtain & Frame (Location Varies)	F12	—	—	SF	SF	O*	O*	O*	O*	O*
	Trash Can Built in	F13	S	S	S	O*	O*	—	—	—	—
AUDIO & ELECTRONICS	PREMIUM Sound Package: Fusion RA-770 Radio, (2) XL Lighted Speakers, 8-Channel Amp, Fusion D Mono Block Digital Amp, 10" Subwoofer, USB Audio Input and Charge	E1	S	—	O	O	O	—	—	—	—
	PREMIUM XL Sound Package: Fusion RA-770 Radio, (2) 7.7" SG Lighted Speakers, (2) 6.5" SG Lighted Speakers in tower, 8-Channel Amp, Fusion D Mono Block Digital Amp, 10" Subwoofer, USB Audio Input and Charge	E2	O	S	O	—	—	—	—	—	—
	Arch & Tower Canister speakers for Premium Sound System - Black	E3	O	O	O	O	O	—	—	—	—
	Arch & Tower Canister speakers for Premium Sound System - White	E3.1	O	O	O	O	O	—	—	—	—
	High Performance Sound Package: Fusion RA-670 receiver, (6) blue lighted XS speakers, 6-channel amp, 10" subwoofer & USB audio input and charge	E4	—	—	S	O	O	—	—	—	—
	High Performance Arch & Tower Canister Speakers for High Performance Sound System.	E5	—	—	O	O	O	—	—	—	—
	Gold Plus sound Package: Fusion RA-670 Radio, (6) Fusion XS LED Lighted blue Speakers & Grills, Fusion 6-Channel Amp, USB Audio Input and Charge	E6	—	—	—	S	—	—	—	—	—
	Silver Plus Sound Package: (6) Fusion EL Speakers & Grills, Fusion 4-Channel Amp, Fusion RA-210 Radio, USB Audio Input and Charge	E7	—	—	—	—	OV	—	—	—	—
	Silver Sound Package: Fusion RA-210 Radio (4) Fusion EL Speakers (4) Fusion EL Speaker Grills, USB Audio Input and Charge	E8	—	—	—	—	S	—	—	—	—
	Bronze Sound Package: Fusion RA-55 Radio, (4) Fusion EL Speakers, (4) Fusion EL Speaker Grills	E9	—	—	—	—	—	S	S	S	S
	Wireless Remote	E10	O	O	O	O	O	O	O	—	—
	USB/AUX Combined Input	E11	S	S	S	S	S	—	—	—	—
	Dual USB charging port on dash	E16	S	S	S	S	O	O	O	—	—
	USB charging Ports (Located in Furniture)	E16.1	S	S	S	S	S	S	S	S	S
	Garmin 743 XSV	E17	S	S	O	O	O	—	—	—	—
	Garmin 73 SV GPS	E18	—	—	S	O	O	O	O	—	—
	Garmin 5CV Fish/Depth	E19	—	—	—	F	O	O	O	O	O
	Vee Three Depth Gauge	E20	—	—	—	O	O	O	O	—	—

S = Standard
O = Option

— = Not Available
OV = Option but Standard on VRL & VRB Floorplans

F = Standard on Fish Models Only
SF = Standard Depending on Floorplan

O* = Option Depending on Floorplan

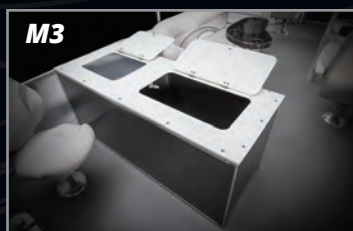


			WAKETOON	EXCALIBUR	EXCALIBUR LTD	CATALINA	LSZ	VENTURE 85	VENTURE	VLS	VTX
PERFORMANCE PACKAGES	27" Waveglider Package	T1	—	S	S	O	O	O	—	—	—
	25" Waveglider Package	T1	—	—	—	O,W	O	O	O*	—	—
	25" Sport Performance Pontoon Package	T2	—	—	—	O	O,W	O,CF	O*	—	—
	25" Transom	D15	—	—	—	FS	—	—	—	—	—
	In Floor Ski Storage	T6	S	O	O	O	O	O	O*	—	—
	HPP Lifting Fins	T7	S	S	S	W,FS,O	—	—	—	—	—
	Side Protector Keel	T9	—	S	S	O	O	O	O	—	—
	Solid Bottom Keels	T12	O	O	O	O	O	O	O	—	—
WATER SPORTS	CX TOWER - Power Hinged	B1	—	S	—	—	—	—	—	—	—
	EXTREME TOWER - Power hinged	B2	S	—	—	—	—	—	—	—	—
	EXTREME TOWER - Wakeboard Racks	B2.1	S	—	—	—	—	—	—	—	—
	DECO SPORT TOWER - 2.5" Round Frame - Hinged Collapsible	B4	—	—	—	O*	O*	O*	—	—	—
	EX TOWER - Power Hinged	B5	—	—	S	O*	—	—	—	—	—
FISHING	Livewell Under Bench	M1	—	O	O	O	O	O	CRBF	—	—
	Baitwell Under Bench	M2	—	O	O	O	O	O	BF	—	—
	Extra Large Livewell/Baitwell Combo	M3	—	—	—	OF	OF	OF	—	—	—
	Rod Box	M4	—	—	—	OF	OF	CF,OF	—	—	—
	Helmstand Livewell	M5	—	—	—	—	—	—	—	—	QF
	Large Rear Fishing Center w/Livewell	M6	—	—	—	F	F	F	—	—	—
	Small Rear Fishing Center w/Livewell	M7	—	—	—	—	—	—	SF	—	QF
	Built In Tackle Trays	M8	—	—	—	F*	—	CF	—	—	—
	Sink w/External Water Supply	M9	—	—	—	F*	—	CF	—	—	—
CANVAS	Full Camper Enclosure	B12	—	—	—	O	O	O	—	—	—
	Half Camper Enclosure	B13	—	—	—	O	O	O	—	—	—
	Seat Covers	B14	O	O	O	O	O	O	O	—	—
	Full Mooring Cover	B15	S	S	S	O	O	O	—	—	—
	Funship Upper Deck Mooring Cover	B16	—	—	—	OFS	—	—	—	—	—
	Playpen Cover	B17	—	—	—	—	—	—	O	S	S
MISCELLANEOUS	Pull Up SST Cleats	D1	S	S	S	O	O	O	O	—	—
	Extended Rear Patio Pad	D4	—	O*	O*	O*	O*	O*	O*	—	—
	Sandbar Rear Deck	D4.1	—	—	—	O*	O*	O*	O*	—	—
	Diving Board Lillipad	D9	—	O	O	O	O	O	O	—	—
	Premium Widestep SST Ladder	D10	S	S	S	S	—	—	—	—	—
	Ladder SST Telescoping	D10.1	—	—	—	—	S	F	—	—	—
	Ladder Aluminum Anodized 4 Step	D10.2	—	—	—	—	—	SF	S	S	S
	Ski Tow Bar Universal	D14	S	S	S	O,W	O	O	O	O	O

S = Standard
 SF = Standard Depending on Floorplan
 QF = Quad Fish
 O = Option
 F = Standard on Fish Models Only
 F* = standard on fish, depending on length

O* = Option Depending on Floorplan
 — = Not Available
 OF = Option on Fish Models Only
 CRBF = Standard on CRBF Only
 CF = Center Console Fish Only
 OFS = Option on Funship Only

BF = Standard on BF Only
 # = Standard Equipment on Triple Pontoon Models
 W = Standard on Windshield Models
 FS = Standard on Funship Model



AVALON



AMAZING SPEED • THE SMOOTHEST RIDE • TWIN ENGINE DEPENDABILITY



25" SPORT PERFORMANCE PACKAGE

Recommended for those desiring an economical 150HP - 200 HP equipped boat with very good weight and wave handling as well as excellent performance. Includes integrated motor pod, 38-gallon transom direct fill fuel tank, 4 lifting fins, wave shield, ski tow bar and SeaStar hydraulic steering. MAXIMUM HP RATING IS 250 HP.



Available on:

- Excalibur & Excalibur LTD - All floor plans
- Catalina 2585 & 2785 EL, ELW, ENT, QL, QLW, RJ, RL, VRB & VRL (Requires 27" Waveglider)

Includes:

- Twin Motor Mounts with Dual Pre Rig Controls
- Center Tube Step with Built in Ladder
- 4 Waveglider Lifting Fins for Maximum Twin Engine Turning
- 100 gallon fuel tank
- 5 Year Structural Warranty
- Rough Water Package



25" OR 27" WAVEGLIDER PACKAGE

This ultimate performance package allows you to achieve higher horsepower, and unrivaled performance. Recommend for those desiring maximum wave handling, speed and performance. Includes integrated motor pod, 58-gallon built-in fuel tank, 6 lifting fins, wave shield, ski tow bar and SeaStar hydraulic steering.

BOATS SHOWN MAY SHOW OPTIONAL EQUIPMENT



LIFETIME LIMITED*
TRANSFERABLE STRUCTURAL WARRANTY

For non-commercial use, single engine equipped boats

**LIFETIME WARRANTY INCLUDES: Pontoons, crossbeams,
seat frames, motor mounts, wood decking, and rail structure**

10 Year Limited* Transferable bow to stern warranty
on all other components on your boat

** Warranty applies to 2024 model boats.
See dealer for full warranty information including limitations and exclusions.*

AVALON

The Art of the Pontoon

more than just a great boat

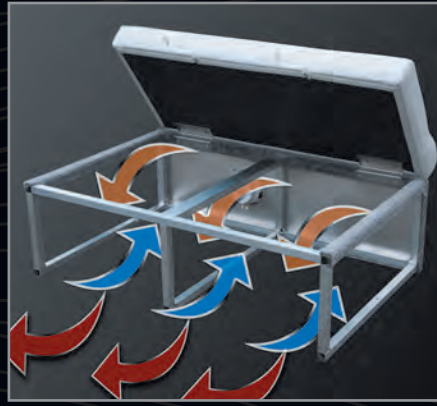
- 2020 NMMA Innovation Award winner
- 2019 Michigan Manufacturer of the Year
- The only pontoon manufacturer to take multiple endurance trips across some of the most challenging waterways in the world
- The FIRST ever pontoon boat to pace an offshore powerboat race. 2785 Excalibur ELW powered by Twin Mercury 450s - Official Pace Boat of Roar Offshore Powerboat Races, October 2019 and October 2021
- The first winner of the NMMA Innovation award for an aluminum pontoon boat
- A perennial winner of the NMMA CSI Award
- One of the few privately owned pontoon boat manufacturers that knows and respects our customers and dealers
- One of the largest vertically integrated boat manufacturing facilities in the world

OFFICIAL PACE BOAT



OF excellence
AWARDS

AVALON'S EXCLUSIVE HEAVY-DUTY MARINE SEAT COVERINGS ARE TESTED STRONGEST AGAINST TEARS, PUNCTURES AND STAINS



You won't have to deal with mildew or fungus with Avalon's exclusive Flo Thru Ventilation™ Seating. Unlike plastic seating, our exclusive aluminum seat frames have external and internal air flow that dries out the seat compartments while moving and even when the boat is stored!



Heavy-duty, stylishly designed, seat frame cladding eliminates fabric covering and provides a vented, beautiful accent to Avalon's Deco designs



Avalon's unique suspension seat cushions provide soft comfortable cushions that don't bottom out on a hard support surface



Heavy-duty deck corner protection. Solid frame includes double solid full risers and double bolted motor pod all connected with double bolted hat channel crossbeams plus bow and stern .250 U bars.



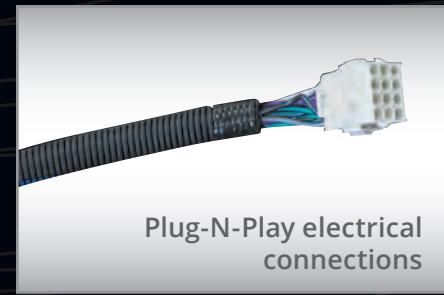
Our exclusive aluminum seat frames have 30 percent more storage than conventional plastic seat frames. Try putting all this in plastic seat storage!



Heavy-duty rub rail with vinyl bumper.



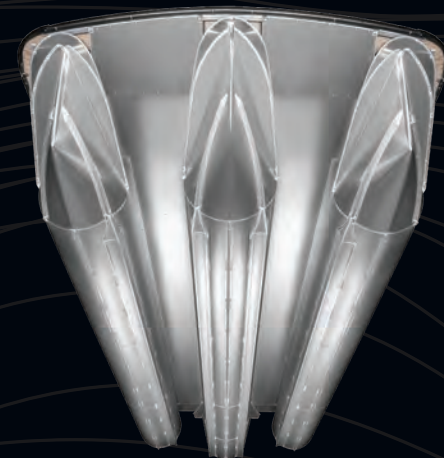
Reflective wall stripe makes boat easier to see at night.



Plug-N-Play electrical connections



Exclusive side protector keel - protects pontoon from side impact at docks, provides a spray diversion and makes pontoon structure stronger.



One-piece nose cone has heavy-duty double-wrapped, double-thickness .200 leading edge. Integrated nose cone splash fins cannot be broken off! Fins have welded edge guard.

VERTICALLY INTEGRATED 90% of Boat is Made In-house



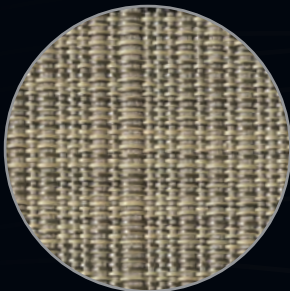
Docklights built into walls are protected from impact and are not a trip hazard! Nose cone tips covered by deck are less prone to damage and are less dangerous than exposed.



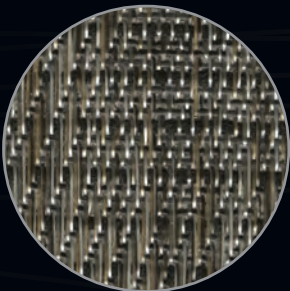
Easy to clean, beautiful external wall.

BOATS SHOWN MAY SHOW OPTIONAL EQUIPMENT

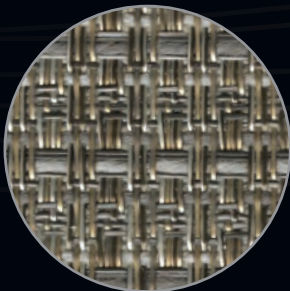
FLOORING



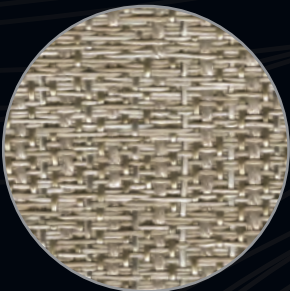
Natural Teak



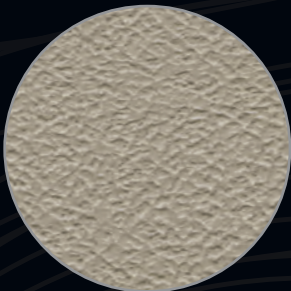
Driftwood



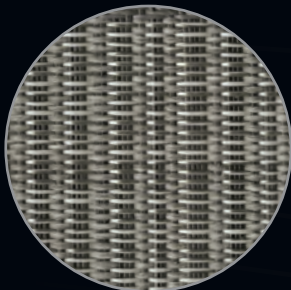
Luna Sand



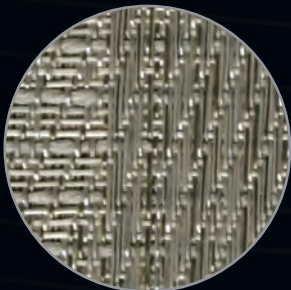
Riptide Dune



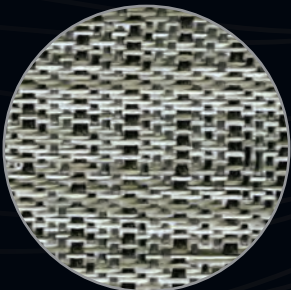
Taupe



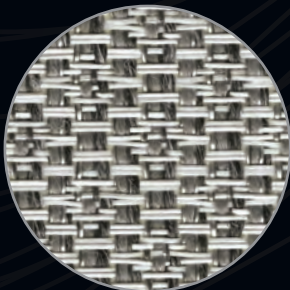
Slate Teak



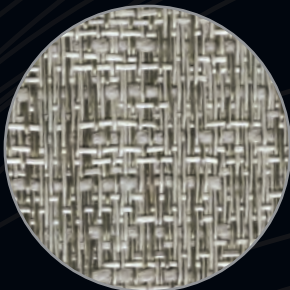
Silverwood



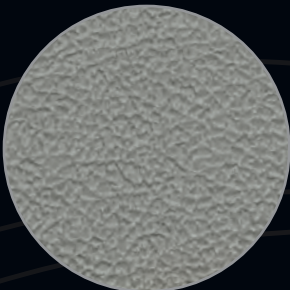
Boardwalk



Luna Pearl



Riptide Shadow



Gray

WALL COLORS (ALL MODELS)



Steel Blue



Blue



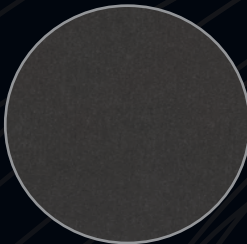
Caribbean Blue



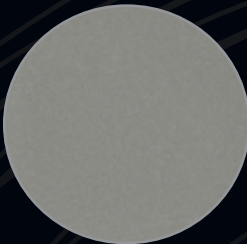
Black



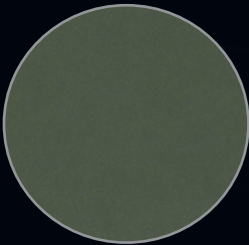
Matte Black



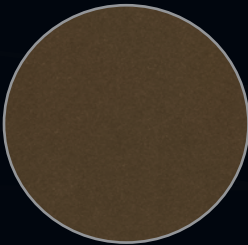
Charcoal



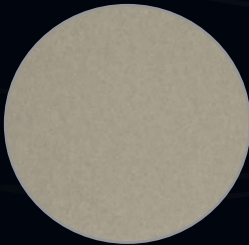
Silver



Sage



Bronze



Champagne



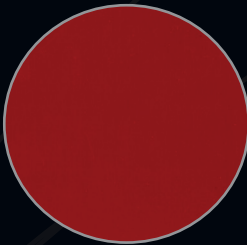
Cream White



White Flake

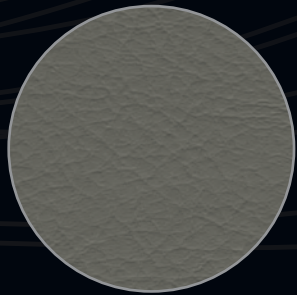


Matte White

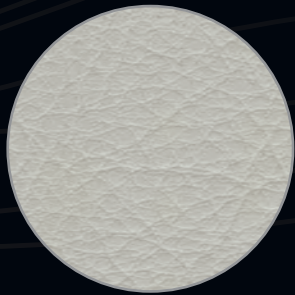


Red

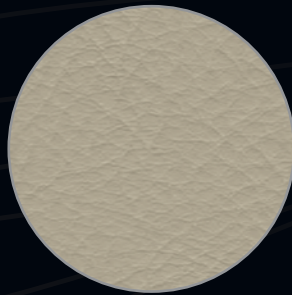
PRIMARY VINYL



Graphite



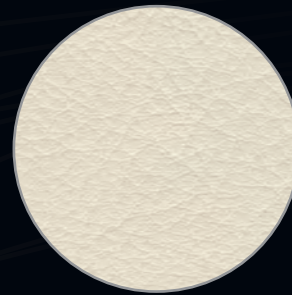
Silver



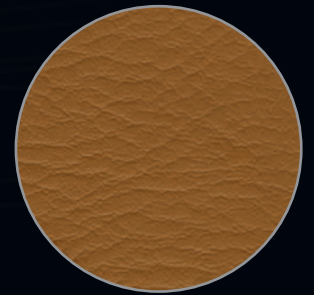
Buckskin



*Bright White
(Base 2 Vinyl Only)*

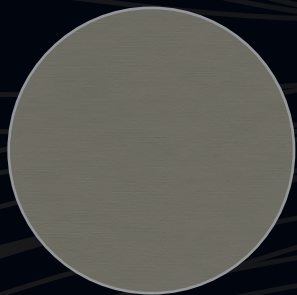


Cream White



Cognac

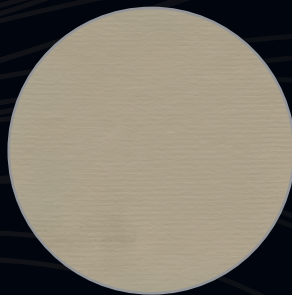
ULTRAFINE PRIMARY VINYL



*Koolfab Ultrafine
Graphite*



Ultrafine Silver



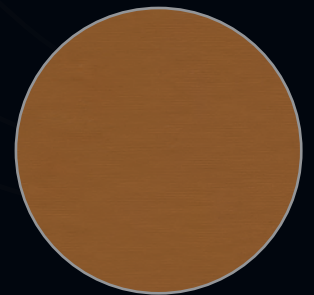
Ultrafine Buckskin



*Ultrafine Bright White
(Base 2 Vinyl Only)*

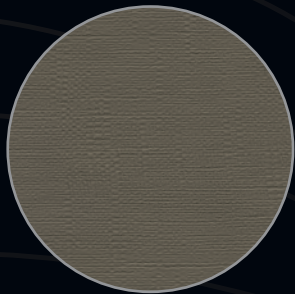


Ultrafine Cream White

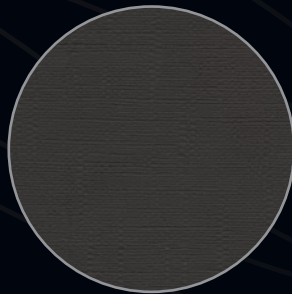


*Koolfab Ultrafine
Cognac*

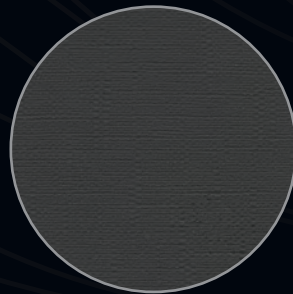
ACCENT VINYL



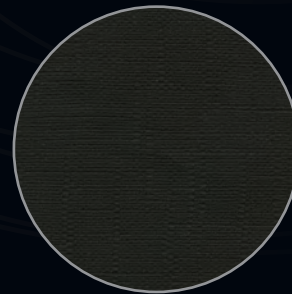
Neutra



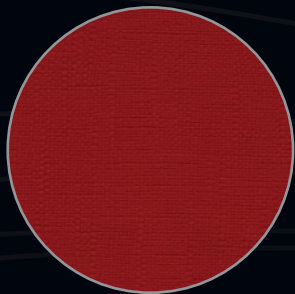
Topsail



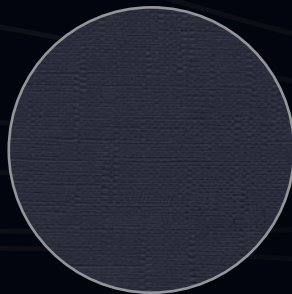
Koolfab Charcoal



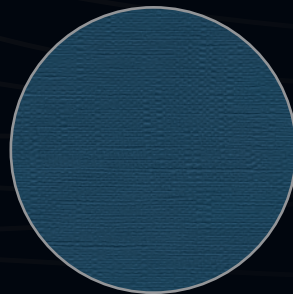
Koolfab Black



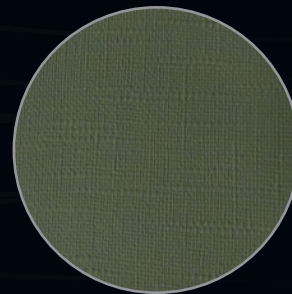
Red



Indigo



Caribbean Blue



Sage

AVALON

Adventure

Avalon is the only manufacturer who truly puts their products to the ultimate test! The Atlantic Ocean, the Pacific Ocean, the Gulf of Mexico, the Caribbean Sea, Lake Superior, Lake Michigan, the Mississippi... need we say more?



Baltimore to Key West
- 2004



Key West to the Dry Tortugas
- 2009



Los Angeles to Catalina Island
to San Diego - 2014



Tampa to Cuba - 2017



Retracing the final voyage of the Edmund Fitzgerald on Lake Superior - 2018



Chicago to Mackinac Island - 2005



Ft. Lauderdale to
Bimini Bahamas - 2006

Enjoy the details of all these
great adventures at
www.avalonpontoon.com



The NMMA-Certified label on an Avalon pontoon boat lets you know it was built to meet, and often exceed, the industry's strictest quality and safety standards for critical components, such as electrical systems, powering, flotation, fuel systems, and navigation lights. Certified boats must also pass rigorous annual inspections from independent third-party inspectors. According to U.S. Coast Guard statistics, NMMA-Certified boats have been shown to be safer than non-certified boats.



A proud supporter of the
Travis Mills Foundation
foundation@travismills.org
"Never give up. Never quit."



www.facebook.com/AvalonPontoons
www.instagram.com/AvalonPontoons

Dimensions, capacities, ratings, and additional specifications plus complete warranty and service information are available from your Avalon dealer. Product illustrations and data within this catalog are based upon information available at the time of publication. Avalon reserves the right to make changes without notice or obligation. Ask your local Avalon dealer for the most current product specifications prior to purchase. Some of the equipment shown separately or on products illustrated in this catalog may be optional at extra cost. All Avalon boats meet or exceed the standards established by the ABYC and USCG flotation, fuel systems, ventilation, electrical, and safety.

PURE MICHIGAN®

OFFICIAL AVALON MERCHANDISE
www.attoonshop.com



Avalon's superior innovation and customer satisfaction is recognized by the two-time Marine Industry Innovation Award and NMMA CSI AWARD every year since 2008!

The background of the entire page is a dark navy blue. It features a series of thin, light blue wavy lines that flow from the top left towards the right. A thick, vibrant teal wave starts from the left edge, dips down, and then rises to curve across the middle of the page. In the bottom right corner, there is a solid white rectangular area.

AVALON

903 Michigan Avenue, Alma, Michigan 48801
Toll Free: 800.334.2913 | 989.463.2112 | Fax: 989.463.8226
www.avalonpontoons.com